

# AUTOMATIC PENCIL SHARPENER EG-5161 MANUAL



For smooth operation and safety reasons, please read the instructions carefully and comply with it for usage.

## HOW TO USE

- Guide the pencil into the top opening gently but firmly.
- **Do not** put too much pressure. Motor will start automatically.
- Sharpen standard wooden, composite and recycled pencils.
- Insert a pencil into the sharpener only if the unit is positioned on a table on a stable and rigid support.
- Remove sharpened pencil after 3-4 seconds. Prolonged use can damage the motor.
- If the sharpener slows down significantly or stops while sharpening, try applying less pressure on the pencil.
- **Do not** force of shove pencil into sharpener, as too much pressure may cause the motor to jam. If it happens simply reduce pressure until motor operates normally again.
- Empty the receptacle when it is half full. The pencil sharpener will not operate properly when full.
- NOTE: make sure the receptacle is in place and tightly closed before operating. Your sharpener will not operate if receptacle is removed.

## MAINTENANCE & SAFETY INSTRUCTIONS

To ensure smooth and trouble-free sharpening:

- Always unplug the sharpener before cleaning or emptying the receptacle.
- DO NOT sharpen writing instruments such as crayons, chalk or soft waxy pencils as they will clog your sharpener's cutter.
- Clean the unit with a damp cloth. Do not use grease, oil or abrasive cleaners as alcohol, benzene or thinner.
- Never submerge your sharpener in water, plugged or unplugged.
- DO NOT insert fingers into the cutting hole.
- DO NOT touch or attempt to remove cutter blades at any time to avoid injury.
- DO NOT attempt to sharpen pencils while the receptacle cover is open.
- DO NOT drop the unit.
- If the receptacle brakes, dispose of the entire unit.
- As with all electrical appliances, keep out of the reach of small children.



**WARNING:**  
IMPORTANT SAFETY GUARDS TO AVOID SERIOUS INJURY

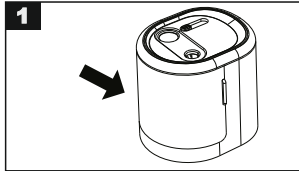


◆ CONSULT INSTRUCTION FOR USE  
This symbol demonstrates that symbols are meant to support. Not replace operating instructions.

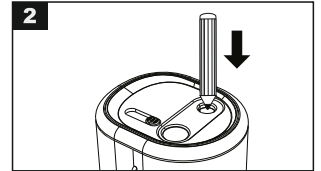


Do not dispose of electrical appliances as unsorted municipal waste, use separate collection facilities. Contact your local government for information regarding the collection systems available. If electrical appliances are disposed of in landfills or dumps, hazardous substances can leak into the groundwater and get into the food chain, damaging your health and well-being. When replacing old appliances with new one, the retailer is legally obligated to take back your old appliance for disposal at least for free of charge.

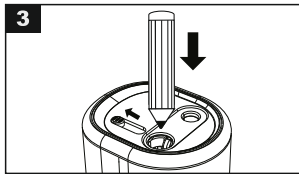
## TROUBLE SHOOTING



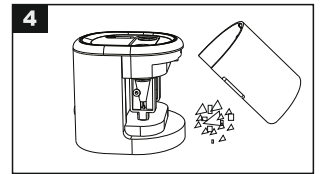
1. Keep the receptacle in place and tightly close before use.



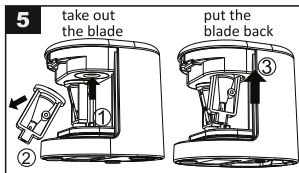
2. Insert a pencil into the hole when you sharpen 6-8mm pencil.



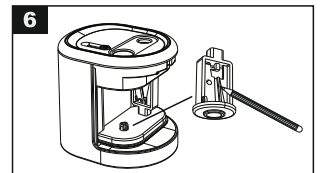
3. Push the sliding-switch when you sharpen 9-12mm pencil, then put the pencil into the hole.



4. Hold both sides of the receptacle and pull it out. Clear the sharpener and then put the receptacle back.



5. Hold the blade up and push in the white circle at the top. There is a spring behind the white circle for convenient blade replacement.

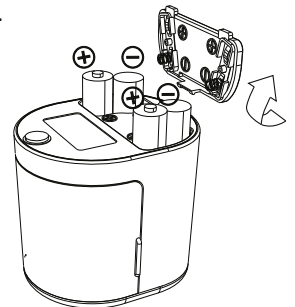


6. Hold the blade up downward. Use the broken-end pencil and point it to the helical blade inside. Move the blade slightly back and forth until the broken lead is released through the gap. Caution: do not use metal rod or screw driver which may damage the blade.

## HOW TO INSTALL BATTERIES

Replace batteries:

- Remove the lid of the battery compartment at the bottom of the sharpener.
- Insert four AA size new batteries in the battery compartment with correct polarity (see indications on battery compartment).
- Close battery compartment.
- Do not mix old and new batteries.
- Always replace all four batteries at the same time.
- Do not mix alkaline, standard (carbon-zink), or rechargeable (nickel cadmium) batteries.
- To avoid damage from battery leakage, remove batteries when unit is not used for long periods.



## SPECIFICATION:

|                     |   |
|---------------------|---|
| Power source DC     | 4 AA 1.5 V Dry Batteries (not included) |
| Dimensions (WxDxH)  | 84 x 72 x 76 mm                         |
| Weight              | 169g                                    |
| Pencil size         | diameter 6-12mm                         |
| Ambient temperature | -18°C to 49°C                           |

